



## M.Z.V - Building Equipment Center



### AluMForm / Mini AluMForm Multi Application Aluminum Formwork



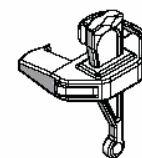
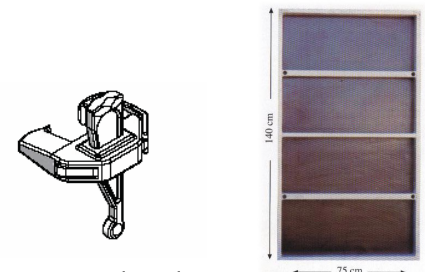
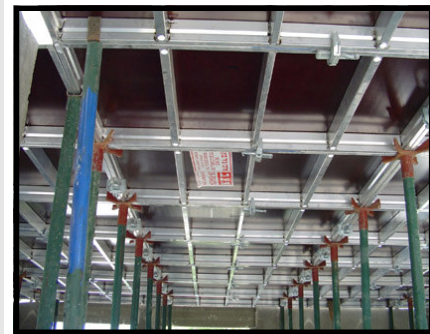
#### AluMForm

The AluMForm Formwork is a crane independent modular formwork system used for roof shuttering and walls application in the same formworks. one formwork weighs about 18 kg/m<sup>2</sup>. As a light-weight aluminum formwork system, AluMForm is designed to resist high concrete pressure up to a height of 2.80 m. The panels are provided with a 15 mm plywood face. Both sides of the plywood are film coated with 240 g to 450 g of synthetic resin per square meter. In the frame the plywood face is additionally protected with silicone.

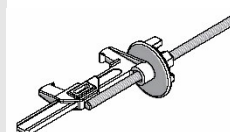
**Economic**— An average team of 2 can assemble up to 180 m<sup>2</sup> deck a day. After the concrete dries there is a smooth layer of multi application formwork concrete, no need for plaster.

**Smart**—multi application used for walls, columns and decks with the same Formworks. Just 1 component (fast panel locker) for all connections. The film faced plywood is very easy to clean.

**Safe**— 1m<sup>2</sup> aluminum Formwork supporting up to 60 KN static load (after taking safety coefficient).



Fast Panel Locker

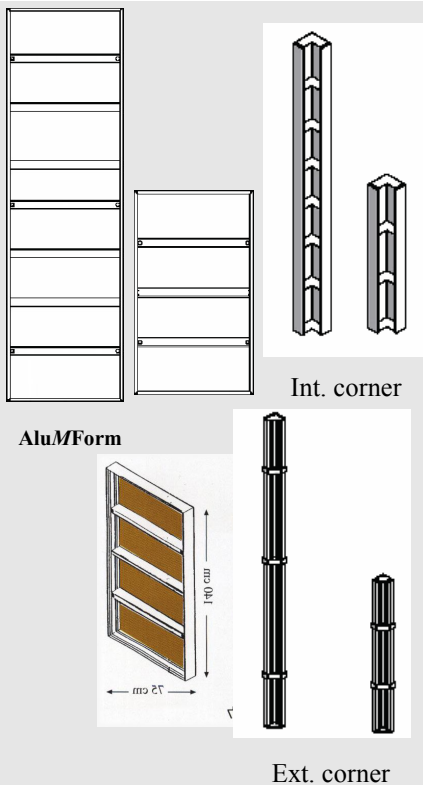


'F' Locker for wood expansion locking

Main office: P.O.B 1510, Mazkeret Batya, 76804 ISRAEL. Tel:(972)-8-9348084/5  
Fax:(972)-8-9348087 www.mzve.co.il, email: info@mzve.co.il



# M.Z.V - Building Equipment Center



## Standard AluMForm Panels

Catalog #	height (cm)	width (cm)	weight (kg)	m2	angle
<b>AluMForm</b>					
AF28075	280	75	37.8	2.1	
AF28060	280	60	30.2	1.68	
AF28050	280	50	25.2	1.4	
AF28040	280	40	20.2	1.12	
<b>Mini AluMForm</b>					
AF14075	140	75	18.9	1.05	
AF14060	140	60	15.1	0.84	
AF14050	140	50	12.6	0.7	
AF14040	140	40	10.1	0.56	
<b>OutSide Corner</b>					
AF280OUT90	280	10X10	42.4	0.56	90
AF140OUT90	140	10X10	21.2	0.28	90
<b>InSide Corner</b>					
AF280IN90	280	20X20	22.3	1.12	90
AF140IN90	140	20X20	11.2	0.56	90

## AluMForm—Wall system



## Mini AluMForm—Roof system



**Main office: P.O.B 1510, Mazkeret Batya, 76804 ISRAEL. Tel:(972)-8-9348084/5  
 Fax:(972)-8-9348087 www.mzve.co.il, email: info@mzve.co.il**